

# Keystone™

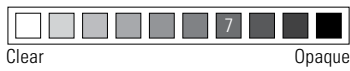


Curved Bevels

Rounded Bright Brass Caming

Gray Baroque Glass

Brass



Clear

Opaque



FC20

30", 32", 36" x 6'8"



FC13

32", 36" x 6'8"



FC36

32", 36" x 6'8"



FC56

32", 36" x 6'8"



FC71\*

32", 36" x 6'8"



FC84

32", 36" x 6'8"



FC119

32", 36" x 6'8"



FC705

32", 36" x 6'8"

# Starlite™

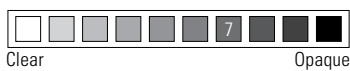


Rounded Bright Brass Caming

Clear Curved Bevels

Waterglass

Brass



Clear

Opaque



FC67\*

32", 36" x 6'8"



FC19

32", 36" x 6'8"



FC39

32", 36" x 6'8"



FC47

32", 36" x 6'8"



FC53

32", 36" x 6'8"



FC86

32", 36" x 6'8"



FC120

32", 36" x 6'8"



FC123

32", 36" x 6'8"

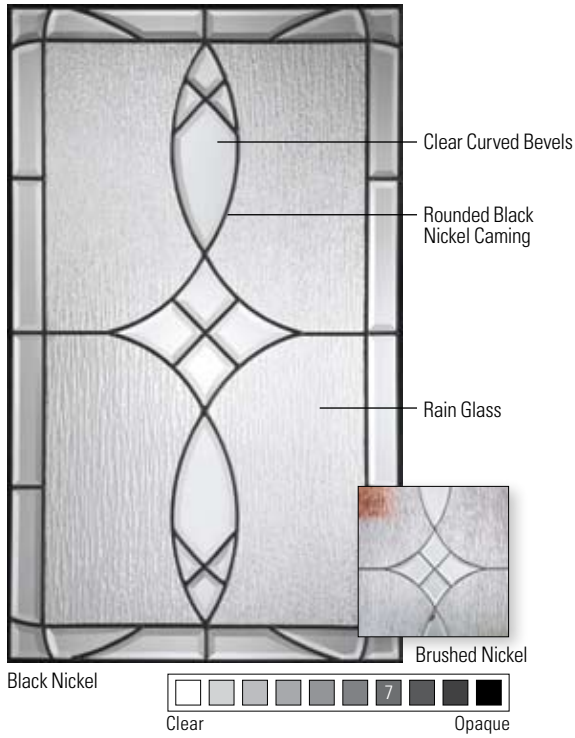
\* All widths also available in 7'0" height



**THERMA TRU®**  
DOORS

The Most Preferred Brand in the Business™

# Blackstone™



FC108 32", 36" x 6'8"

FC109 32", 36" x 6'8"

FC110 32", 36" x 6'8"

FC111 32", 36" x 6'8"



FC112 32", 36" x 6'8"

FC129 32", 36" x 6'8"

# Crystalline™



FC16 32", 36" x 6'8"

FC38 32", 36" x 6'8"

FC21 30", 32", 36" x 6'8"

FC41 32", 36" x 6'8"



FC91 32", 36" x 6'8"

FC43 32", 36" x 6'8"

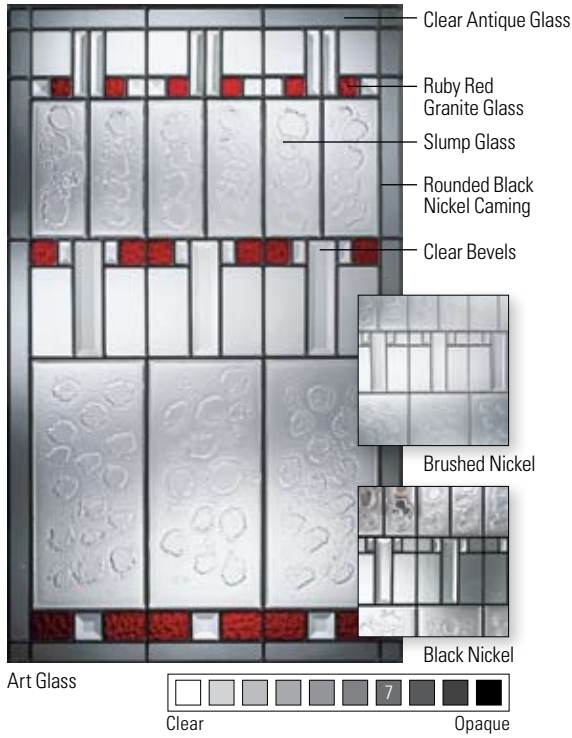
FC45\* 32", 36" x 6'8"

FC124 32", 36" x 6'8"

\* All widths also available in 7'0" height



# Sedona™



FC100 32", 36" x 6'8"

FC101 32", 36" x 6'8"

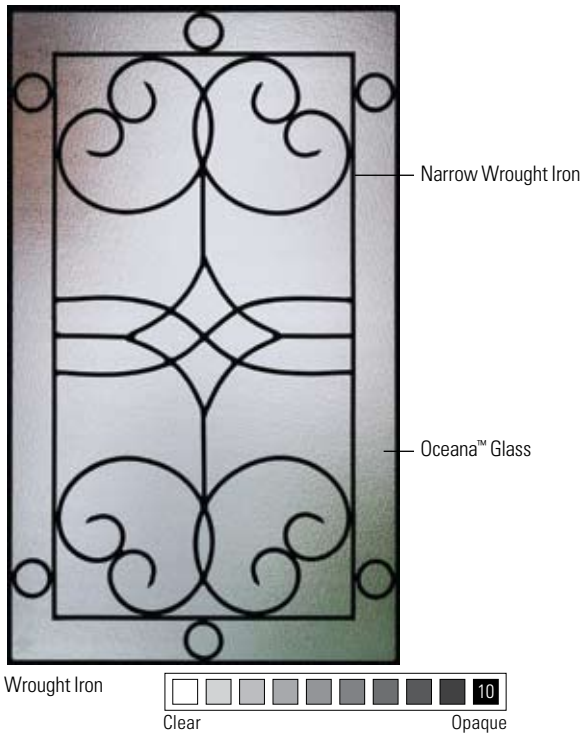
FC126 32", 36" x 6'8"



FC131 32", 36" x 6'8"

FC128 32", 36" x 6'8"

# Salinas™



FC113 (W) 32", 36" x 6'8"

FC114 (W) 32", 36" x 6'8"

FC115 (W) 32", 36" x 6'8"

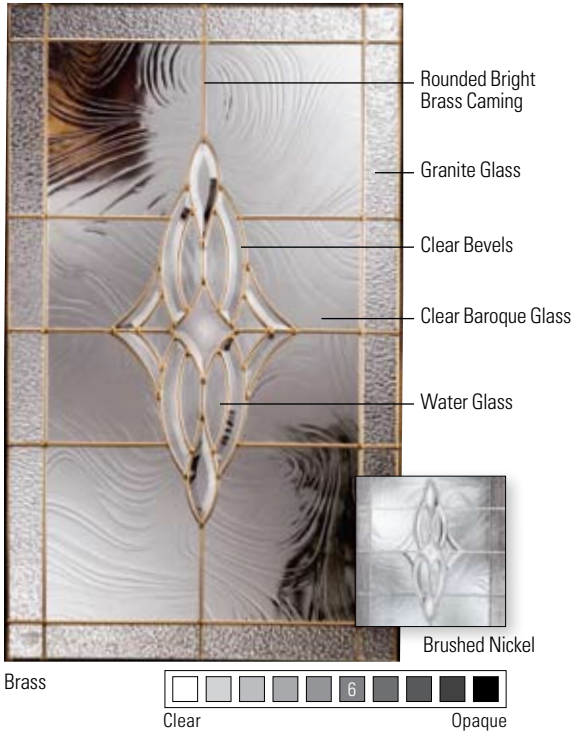


FC118 (W) 32", 36" x 6'8"

FC130 (W) 32", 36" x 6'8"



# Wellesley™



FC104 32", 36" x 6'8"  
 FC105 32", 36" x 6'8"  
 FC106 32", 36" x 6'8"  
 FC107 32", 36" x 6'8"



FC121 32", 36" x 6'8"  
 FC125 32", 36" x 6'8"  
 FC127 32", 36" x 6'8"

# Bevelline



FC12 32", 36" x 6'8"  
 FC25 30", 32", 36" x 6'8"  
 FC54 32", 36" x 6'8"  
 FC58 32", 36" x 6'8"



FC68\* 32", 36" x 6'8"  
 FC1509 30", 32", 36" x 6'8"  
 FC1578 32", 36" x 6'8"

\* All widths also available in 7'0" height



The Most Preferred Brand in the Business™

# Frosted Images®



FC11

32", 36" x 6'8"

FC122

32", 36" x 6'8"

FC44

32", 36" x 6'8"



FC66\*

32", 36" x 6'8"

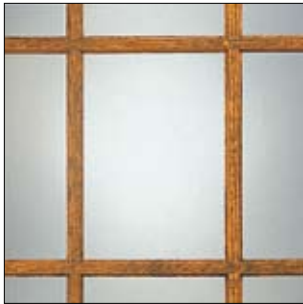
FC1309

30", 32", 36" x 6'8"

FC1378

32", 36" x 6'8"

# Clear Glass



FC10

32", 36" x 6'8"

FC18

32", 36" x 6'8"

FC23

30", 32", 36" x 6'8"

FC32

32", 36" x 6'8"



FC48

32", 36" x 6'8"

FC61\*\*

30", 32", 36" x 6'8"

FC65R\*

32", 36" x 6'8"

FC80

32", 36" x 6'8"

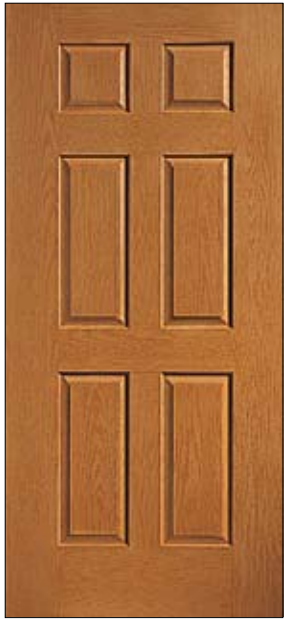
\* All widths also available in 7'0" height  
 \*\* 32" and 38" also available in 7'0" height



**THERMA TRU®**  
**DOORS**

*The Most Preferred Brand in the Business™*

# Solid Panel Styles



Fiber-Classic has the warm, rich look of hardwood, with all of the advantages of Therma-Tru fiberglass.



FC31

32", 36" x 6'8"



FC40

32", 36" x 6'8"



FC60\*

32", 36" x 6'8"



FC134

32", 36" x 6'8"



FC135

32", 36" x 6'8"



FC755

32", 36" x 6'8"



FC1000\*

30", 32", 36" x 6'8"

\* All widths also available in 7'0" height



**THERMA TRU**  
DOORS  
*The Most Preferred Brand in the Business*

# Single Door Entrance Systems

## Fiber-Classic® Fiberglass Entry Door Systems



FC106

Few doors stand the test of time like a beautiful Fiber-Classic® entryway. It's the industry's original fiberglass door, engineered with the look and feel of a natural wood door.

The designs shown in the Big L Distributors Therma Tru Fiber-Classic® Selection guide represent the most popular selections from each of the Therma-Tru Fiber-Classic® glass and panel collections.

### The pricing shown below each design is for the following specification:

- 30", 32", 34" or 36" x 80" or 84" nominal size unpainted, unstained Fiber-Classic® doors. Specific design size availability as noted. Therma Tru Finishing Kit not included.
- Rough opening sizes of 32-1/2" (30" door), 34-1/2" (32" door), 36-1/2" (34" door) or 38-1/2" (36" door), x 82-1/2" or 86-1/2"
- The unit is prehung with (3) brasstone self-aligning hinges in a 4-9/16" weather-stripped prime painted Frame-Defense® wood jamb, the door and jamb are prepped for lockset and deadbolt, a Tru-Defense aluminum sill with composite substrate and adjustable riser with a protective sill cover applied, adjustable security strike plate, and exterior brickmould casing.
- Prices do not include sales tax, delivery charges, or installation.

Prices and availability are subject to change without notice and are intended to give you a general guide to a broad range of design choices. Your final price may vary depending on jamb specifications, and hardware and sill options. Please call us at 800-336-2445 to get an exact detailed quotation, including installation.

For the complete selection of Therma Tru Doors, visit [www.thermtru.com](http://www.thermtru.com).



Polyurethane Foam Core. Offers five times the energy efficiency of a wood door and is CFC-free.



Our BTS doorlite frames stand up to temperature extremes.

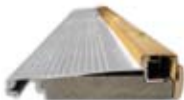


Polystyrene doorlite frames warp and turn yellow over time.



Weatherstrip. Foam-filled compression weather-stripping remains flexible and seals your entrance against moisture and air infiltration.

Exclusive Doorlite Frames. BTS Doorlite frames handle temperature swings and extremes without warping, splitting, cracking, or yellowing – even behind storm doors where thermal heat buildup occurs. You can stain or paint Therma Tru doors a dark color without worry, or compromising the warranty.



Tru-Defense Sills.. High Dam design with composite threshold cap locks under the door while a flush surface provides full contact between the sweep and sill to keep water out.



Kerfed Door bottom. Provides a tight seal. Composite top and bottom rails won't rot or warp.



Tru-Defense Corner Seal pad. It's innovative design creates a pocket that effectively prevents water infiltration.



Tru-Defense Door Bottom Sweep. Features dual bulbs with dual fins that sit tightly on the sill to help prevent air and water infiltration.

**GUARD  
AGAINST  
ATTACK**

### Frame Defense Limited Lifetime Warranty Exterior Door Frames

Frame Defense provides an effective method of controlling moisture using a combination of a high quality primer with a specially formulated end grain seal to create an advanced moisture barrier

